

Semi-Annual Social Safeguard and Resettlement Monitoring Report

June – December 2020

ADB LOAN No. 3928 INO

INO: Geothermal Power Generation Project



PT Geo Dipa Energi (Persero)

PT Geo Dipa Energi (Persero)

Project Management Unit

VALIDITY SHEET

| | Position | Signature |
|--------------------|--|-----------|
| Prepared by | Government Relation & Social Safeguard Staff | |
| | | Date: |
| | Government Relation & Social Safeguard Assistant Manager | |
| | | Date: |
| Approved by | HSE & Safeguard Manager | |
| | | Date: |
| | Project General Manager | |
| | | Date: |

TABLE OF CONTENTS

| | |
|---|-----|
| VALIDITY SHEET | i |
| TABLE OF CONTENTS | ii |
| LIST OF FIGURES | iii |
| LIST OF TABLES..... | iii |
| I. Introduction | 1 |
| A. Project Objectives | 1 |
| B. Project Components | 2 |
| C. Scope of Project Impacts..... | 7 |
| II. OBJECTIVES OF SOCIAL SAFEGUARDS MONITORING REPORT | 11 |
| III. SOCIAL SAFEGUARDS PLANNING DOCUMENT IMPLEMENTATION PROGRESS. 11 | |
| A. Dieng 2 Sub-Project | 11 |
| B. Patuha 2 Sub Project..... | 28 |
| IV. Institutional Support to Social Safeguards | 30 |
| A. Staff Support to Ensure Compliance..... | 30 |
| B. Funds Availability and Sourcing and Limitations to RP Implementation | 31 |
| V. Other Concerns and Notations | 31 |
| A. Loan Covenants Compliance Analysis | 31 |
| B. Compliance to Social Safeguards Policy Principles | 34 |
| C. Compliance to the Entitlement..... | 37 |
| VI. Outstanding Issues on Resettlement, Corresponding Plan of Action and Status | 43 |

LIST OF FIGURES

| | |
|---|---|
| Figure 1. Layout of the Proposed Dieng-2 Expansion Components. | 3 |
| Figure 2. Power Plant & Surface Facilities for Patuha-2 Expansion Sub-Project. | 6 |

LIST OF TABLES

| | |
|---|----|
| Table 1. Project Components and Land Requirements for the Proposed Dieng Geothermal Power Plant Expansion. | 4 |
| Table 2. Summary of Impacts due to Land Acquisition and Land Clearing. | 7 |
| Table 3. Summary of Area and Status of Land Needed for Patuha-2 Expansion Facilities. | 9 |
| Table 4. Summary Consultation Held during Preparation of RP (Planning Stage). | 12 |
| Table 5. Summary Consultation Held for Land Clearing and Land Acquisition Implementation. | 14 |
| Table 6. Summary of Others Consultation Related to The Project. | 14 |
| Table 7. Land Clearing Activities. | 17 |
| Table 8. Equivalent Assessment for the Entitlement. | 20 |
| Table 9. Comparison of the Affected Persons, Affected Area, Affected Crops and Compensation. | 21 |
| Table 10. Updated Project Components and Land Requirements for the Proposed Dieng Geothermal Power Plant Expansion. | 23 |
| Table 11. Livelihood Restoration Activities. | 24 |
| Table 12. Verification and Validation of Community Social Impacts Management in the Context of Providing Land for National Development of Dieng Geothermal Power Plant Unit 2 in Karangtengah Village, Batur District, Banjarnegara Regency. | 26 |
| Table 13. Summary of Grievance/Complaints Received and Resolution Status. | 27 |
| Table 14. Summary of Consultation held for Patuha 2 Sub-Project. | 28 |
| Table 15. Summary of Grievance/Complaints Received and Resolution Status. | 30 |
| Table 16. Loan Covenants Compliance Analysis (as of 31 December 2020). | 31 |
| Table 17. Social Safeguards Project Principles Compliance Analysis (as of 31 December 2020). | 34 |
| Table 18. Compliance Assessment to The Entitlement Matrix as of December 2020. | 38 |
| Table 19. Outstanding Issues and Concerns. | 43 |

I. Introduction

A. Project Objectives

1. The proposed Geothermal Power Generation Project will support expansion of Indonesia's geothermal generating capacity to contribute to the sustainability, resiliency, and sufficiency of the electricity system, aligned with Sustainable Development Goals (SDGs) 7 on access to affordable, reliable, sustainable and modern energy for all and SDG 13 on urgent action to combat climate change and its impacts. The project will support PT Geo Dipa Energi (GDE), a state-owned geothermal company focused on development and operation of geothermal resources, to commission an additional 110 megawatts (MW) of geothermal electricity generating capacity¹—55 MW at the Dieng geothermal field in Central Java and 55 MW at the Patuha geothermal field in West Java.
2. GDE currently operates a 55 MW power plant at Dieng and a 55 MW plant at Patuha, which were transferred to GDE after commissioning and after drilling, respectively. In the near term, GDE plans to commission the additional units at Dieng and Patuha proposed for financing under the project. GDE will also be supporting government exploratory drilling campaigns and developing greenfield geothermal projects in areas where they hold the development rights. GDE has limited experience to support exploratory drilling and greenfield project development. Thus, successful development of the proposed subprojects and of GDE's institutional capacity will better equip them to further expand their operations for maximal use of Indonesia's geothermal resources.
3. **Impact and outcome.** The project is aligned with the following impacts: (i) contribution to geothermal energy in Indonesian power supply increased,² and (ii) renewable energy in electricity subsector increased. Its outcome will be adequacy and sustainability of energy supply increased.
4. **Outputs.** The project will have the following outputs:

Output 1: Geothermal power plants constructed and commissioned. The project will support GDE in constructing and commissioning a 55 MW geothermal power plant at Dieng, Central Java Province (Dieng Unit 2) and a 55 MW geothermal power plant at Patuha, West Java province (Patuha Unit 2). Both Dieng Unit 2 and Patuha Unit 2 subprojects will include: (i) drilling of new wells for production and reinjection of reservoir fluids, and (ii) construction of a steam above ground gathering system and fluid reinjection lines connecting the wells and generating units. Patuha Unit 2 will be single-flash power plant, and Dieng Unit 2 will be a geothermal combined cycle plant.⁴ The project will also support the transmission interconnection systems between the plants and the grid. At Dieng, this will include commissioning of a new, 6-kilometer underground transmission line to the Dieng substation. Existing lines and towers will be used to connect Patuha Unit 2 to the Patuha Substation, but the project will include installation of a new transformer at the existing substation.

Output 2: Institutional capacity of GDE strengthened. The project will strengthen GDE's capacity to plan, develop, and operate geothermal power plants, including management of complex technical conditions and multiple coordinated contracts. This will be accomplished through gender-responsive training programs organized by the pilot plant consultants and project management consultants (PMC) on reservoir management and procurement as well as on-the-job-training, supported by the PMC, through the fulfillment of the ADB procurement, financial management, and reporting requirements. GDE will additionally increase their ability to manage environmental and social risks through implementation of a revised Environmental Management System that will incorporate gender, climate, and community safety considerations.

Output 3: Community development program enhanced. The project will support enhancement of GDE's Community Development Program.⁵ This will begin with implementation of a Gender-Responsive Stakeholder Communication Strategy,⁶ which will involve (i) increased outreach and education on the project and associated impacts, and (ii) information gathering on the communities' challenges, including consideration to the differential needs and experiences of men and women. Improved communication will help address misperceptions around the existing power plant and planned future development; this is particularly important at Dieng where communities live and cultivate between and around various project sites. Based on insights from the communities on key challenges and needs, the Community Development Program will then realign activities to focus on those actions that will most meaningfully contribute to improved well-being of the men and women in the project communities, perhaps with a stronger emphasis on challenges such as access to education, water strain, declining agricultural production, and alternative livelihood opportunities. The improved communication and more strategic focus of programs to benefit neighboring communities will strengthen the relationship with GDE and support for the project among nearby communities. The PMC will also develop a feasibility study for a geothermal direct-use project, such as for agricultural drying or heating for homestays, that could provide enhanced livelihood opportunities for community members. This direct use investment could then be implemented in parallel with development of Dieng Unit 3 as part of the Community Development Program.

B. Project Components

5. To achieve expected outcome, the project will have the following outputs:

Geothermal power plants constructed and commissioned. The project targeted that additional 60 MW geothermal electricity generating plant at Dieng commissioned and additional 59 MW geothermal electricity plant at Patuha commissioned by 2024.

Institutional capacity of GDE strengthened. GDE staff have increased knowledge of brine management in geothermal operations, GDE staff with increased knowledge in project contract management, and environmental management system with gender considerations endorsed and implemented by GDE by 2024.

Livelihood of neighboring communities improved.

1. Dieng 2 Sub-Project

6. The Dieng Geothermal Expansion sub-project (Dieng-2) will include drilling of new wells for geothermal fluid production and re-injection, and development of a steam above ground gathering system and fluid reinjection lines connecting wells and generating units. Dieng will have a combined cycle plant with both steam and Organic Rankine Cycle turbines. The sub-project will also support the transmission interconnection systems between the plants and the grid; this will include a new 6-km underground transmission line to the Dieng Sub-station. The GPGP will additionally strengthen GDE's capacity to plan for develop and operate geothermal power plant and enhancement of GDE's Community Development Program through more strategic engagement with the communities and evaluation of program.
7. The project will contribute to the increased geothermal energy in Indonesia power supply in line with Electricity Power Supply Business Plan (RUPTL 2018 – 2027) and the increased renewable energy in energy electricity sector (first nationally determined contribution to the UNFCC). The outcome will be the increased of the adequacy and sustainability of energy supply which target by 2027 that additional 770 GWh of

geothermal electricity generated annually and at least 400,000 tons of CO₂ equivalent avoided annually.

8. The Sub-project (Dieng-2) will construct a new power plant, sub-station, transmission lines and pipelines. No new well pads will be added, but 10 new wells¹ will be drilled on existing wellpads. Table 1 provides a list of Dieng-2 components to be added to the existing Dieng-1 Geothermal Plant facilities. The sub-project will include (a) drilling of new wells for geothermal fluid production and re-injection, (b) construction of fluid collection and re-injection systems, (c) power plant, and (d) transmission inter-connection systems.
9. The Dieng sub-project faces technical challenges and high-density of farming activities at the Dieng reservoir location. As part of ADB's assistance, the project will enhance health, safety, emergency planning, and livelihood opportunities for nearby communities. The Dieng-2 sub-project will not use any forest land except for laying of the proposed underground transmission line which will pass under an existing pipeline and inspection road right-of-way (ROW) through protection forest, for which PT Geo Dipa already has a permit (IPPKH). These activities will serve as an example for how Indonesia's geothermal resource in similar geographic contexts can be developed without detriment to the existing surroundings.
10. Figure 1 provides a map of the location and- layout of the proposed Dieng-2 expansion components recommended by the Dieng and Patuha Feasibility Study approved by the GDE Board of Directors per August 2019.

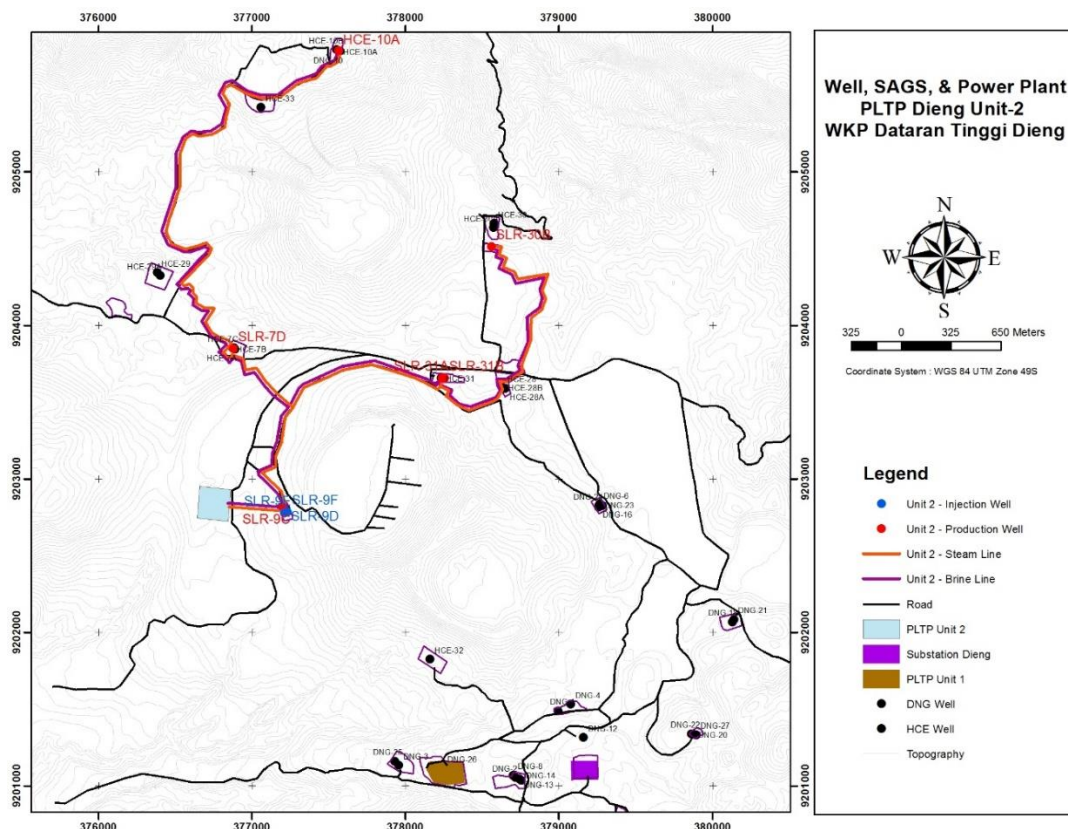


Figure 1. Layout of the Proposed Dieng-2 Expansion Components.

¹ 4 production wells, 5 injection well and 1 contingency well

Table 1. Project Components and Land Requirements for the Proposed Dieng Geothermal Power Plant Expansion.

| No | Infrastructure Component | Location | | | Owner of Land | Required Area # | | | IR Impacts (Yes/No) |
|----|-------------------------------|------------------|--------------------|---|------------------|-----------------|-----------|------------------------|--|
| | | Location | Well | Village | | Length (m) | Width (m) | Area (m ²) | |
| 1 | Power Plant (Dieng-2) | | Well 38 | Karangtengah | GDE | | | ± 58,479* | Yes 23 AHs (land users). |
| 2 | Underground Transmission Line | | | 4 villages - Karangtengah, Dieng Kulon, Bakal and Sikunang ² | GDE | + 6,000 | 2 | ± 12,000 | No Area required will be existing pipeline ROW owned by GDE. The TL will cross provincial road. |
| | | | | | GDE | | | | No Under existing inspection road and pipeline and inspection road ROW. |
| | | Near sub-station | | Sikunang | Min. of Forestry | | | | No |
| 3 | Sub-station | | | Sikunang | GDE | | | | No Will use existing Dieng 1. |
| 4 | Well pads | Pad7 | SLR-7D | Karangtengah | GDE | | | ± 13,900 | No |
| | | Pad9 | SLR-9C, 9D, 9E, 9F | Karangtengah | GDE | | | ± 8,500 | No |
| | | Pad10 | HCE-10A | Kepakisan | GDE | | | ± 22,100 | No Reactivation of old well. |
| | | Loc-O | SLR-30B | Karangtengah | GDE | | | ± 30,200 | No |
| | | Loc-Q | SLR-31A, 31B | Karangtengah | GDE | | | ± 41,100 | No |
| 5 | Pipeline & access road | Pad 10 to Pad 7 | | Kepakisan ³ / Karangtengah | GDE | | | ± 34,000 | No GDE ROW split by Village Road – 4 m wide on either side of existing road. |

² Desa Karangtengah, Dieng Kulon, and Bakal are located in Kecamatan Batur, Kabupaten Banjarnegara, whereas Desa Sikunang is in Kecamatan Kejajar, Kabupaten Wonosobo.

³ Desa Kepakisan is in Kecamatan Batur, Kabupaten Banjarnegara.

| No | Infrastructure Component | Location | | | Owner of Land | Required Area # | | | IR Impacts (Yes/No) |
|----|--------------------------|--------------------------|------|--------------|---------------|-----------------|-----------|------------------------|---|
| | | Location | Well | Village | | Length (m) | Width (m) | Area (m ²) | |
| | | Pad 7 to Pad 9 | | Karangtengah | GDE | | | ± 25,900 | No COI = existing ROW 12 m. |
| | | Pad 9 to Dieng-2 PP | | Karangtengah | Private | | 10 | ± 3,010 * | Yes Land acquisition required (6 land owners). |
| | | Triple junction to pad Q | | Karangtengah | GDE | | | ± 28,100 | No COI = existing ROW 12 m. |
| | | Loc-Q to Loc-O | | Karangtengah | GDE | | | ± 31,000 | No COI = existing ROW 12 m. |
| | TOTAL | | | | | | | ± 308,289 | |

2. Patuha 2 Sub-Project

11. GDE's geothermal plant in Patuha is located in the mountain area of Ciwidey Sub-district (*Kecamatan*), Bandung Regency (*Kabupaten*), West Java Province. Patuha was initially developed in 1996-1998 by Patuha Power Limited (PPL, a wholly owned company of CallEnergy, USA). CallEnergy exited Indonesia in 1999, and the Patuha field was taken over by GDE in 2002. In 2014 GDE commissioned Patuha Unit 1 Power Plant using the well that CallEnergy drilled. Space and facilities for the Patuha Unit 2 Power Plant and electrical connection have already been provided as part of Patuha Unit 1 construction.

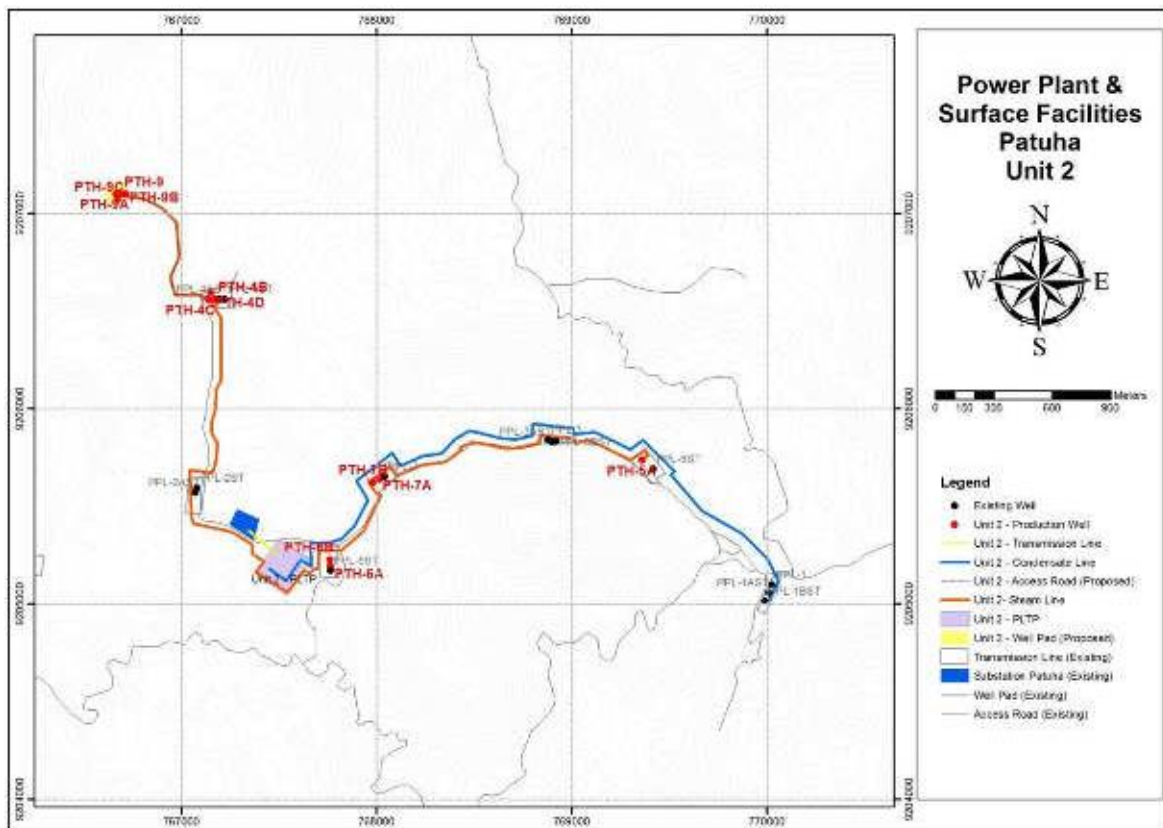


Figure 2. Power Plant & Surface Facilities for Patuha-2 Expansion Sub-Project.

12. Figure 2 presents a lay-out map of the proposed Patuha-2 sub-project. The expansion of the existing geothermal facilities (Patuha-2 sub-project) will consist of the following components:
- i) construction of a new power plant - Patuha Unit 2 (Loc GPP);
 - ii) the drilling of 11 new wells:
 - a) 9 new wells will be drilled in existing wellpads viz. Wellpad 4 (Loc G), Wellpad 5 (Loc W), Wellpad 7 (Loc V) and Wellpad 6 (Loc U), and
 - b) 3 new wells will be drilled in a new (proposed) wellpad - Wellpad 9 (Loc BB);
 - iii) construction of new gas pipelines
 - a) from Wellpad 9 (Loc BB) to Wellpad 4 (Loc G) to the new power plant, and
 - b) from Wellpad 5 (Loc W) to Wellpad 7 (Loc V) to Wellpad 6 (Loc U) to the new power plant;
 - iv) construction of a condensate line from the new power plant to existing Wellpad 1 (Loc A); and
 - v) addition of a new transformer at the existing Patuha Substation approximately 200 m from the power plant.

13. The existing Patuha power plant complex and Patuha-2 expansion sub-project area are quite isolated from the residents. Several GDE power plants are located in the border area that cannot be traversed by residents. Security personnel guard the complex around the clock.

C. Scope of Project Impacts

1. Dieng 2 Sub-Project

14. As showed in Table 1 above, the expansion of the existing Dieng Geothermal Plant will require a total of 30.83 Ha. Of this, 30,53 Ha of land is already owned by GDE, while the remaining 3,010 m² is privately owned land to serve as the Right of Way (ROW) the construction of a new pipeline and inspection road ROW connecting Wellpad 9 to the Dieng-2 power plant .
15. A total of 5.7 ha GDE-owned land (ex Mess GDE site) will be cleared for the project. This site is located in Karangtengah Village. The site has been leased on an annual basis to a farmers' group -*Kelompok Sadar Alam dan Tani "Merdada Sejahtera"* over the last 20 years. 23 tenant farmers (79 APs) will lose access to productive arable land which they have been leasing for between 10-20 years. The current land lease between the KODIPA (GDE Cooperative) and the head of the 4 coordinators on behalf the farmer group. One small plot of land (471 m²) in the new pipeline ROW, which is being cultivated by one farmer encroaching GDE's land. Land acquisition and cessation of activities on land currently owned by GDE identified for Dieng-2 development will affect 106 persons (29 households) and 4 lease coordinators (21 persons). All AHs reside in the village of Karang Tengah, (Kecamatan Batur, Kabupaten Banjarnegara). No relocation will be required. However, many (24) of the affected family will experience severe impacts (i.e. lose 10% or more of access to productive land and/or income). 14 affected households are also categorized as vulnerable⁴.

Table 2. Summary of Impacts due to Land Acquisition and Land Clearing.

| Total land Requirements | |
|--|--|
| Land owned by GDE | 305,279 m ² (or 30.53 ha) ⁵ |
| Privately owned land | 3,010 m ² |
| Sub-Total | 308,289 m ² |
| Total amount of affected crops (only seasonal crops will be affected) | |
| Predominantly potatoes with some temperate vegetables | 43,735 m ² |
| ▪ crops cultivated by land owners | 3,010 m ² |
| ▪ crops cultivated by land users | 40,725 m ² |
| Total number of people affected | |
| Number of affected land owners | 5 households |

⁴ Affected vulnerable households are those classified as households headed by women, elderly, or disabled, (ii) households falling under the generally accepted indicator for poverty, (iii) landless households, and (iv) ethnic minorities.

⁵ Of which approximately 6 ha is existing pipeline and inspection road ROW under which the TL cable will be buried.

| | |
|--|--|
| | 21 persons (HH members) |
| Number of land owners and also land users (tenant farmers) | 1 household 6 persons (HH members) |
| Number of affected land users | 23 households 79 persons (HH members) |
| Lease coordinator (indirect impact) | 4 households 21 persons (HH members) |
| Total number of severely affected people (lose >10% of productive land or >10% of income source) | 24 households 86 persons (HH members) |
| Total number of vulnerable people | 14 households 47 persons (HH members) |
| ▪ Number of poor households ⁶ | 2 households 9 persons (HH members) |
| ▪ Number of poor and landless households. | 2 households (9 household members) |
| ▪ Number of elderly headed households (cannot cope with daily work). ⁷ | 1 households (2 household members) |
| ▪ Number of elderly and landless households | 3 households (7 household members) |

2. Patuha 2 Sub-Project

16. Land requirements for the Patuha-2 sub-project components are provided in Table 3. Most of the land required for the sub-project is already owned by GDE. An additional 28,000 m² (or 2.8 Ha) needs to be acquired. Table 2 indicates components which will be constructed on GDE-owned land. Table 2 also indicates that additional land to be acquired for (i) Wellpad 9 (Loc BB), and (ii) right-of-way (ROW) for new pipeline and inspection road between Wellpad 9 (Loc BB) and Wellpad 4 (Loc G) are located in protection forest area for which the required permits (IPPKH³) from Perum Perhutani for use (*pinjam pakai*) of forest land will be processed. There will no involuntary resettlement impacts - no privately-owned land or assets will be affected; no people will be affected. Plantation workers still have access to their workplace (tea gardens and factory).
17. The proposed Patuha-2 expansion involves acquisition of additional land for three new well pads (PTH 9, 9A and 9B), access roads, and steam pipelines⁵. There will also be drilling of 9 new wells in existing well pads which will not entail land acquisition⁶. Land to be leased for project expansion components are located in protected forest under the jurisdiction of PT Perhutani. There are no people residing or using the forest to farm or build livelihoods. The Patuha-2 field lay-out is shown in Figure 2.

⁶ per capita income/month below Kab. Banjarnegara poverty line for Rp. 278,210 for 2017.

⁷ Total no. of elderly households is 4 of whom 3 HH are also landless.

Table 3. Summary of Area and Status of Land Needed for Patuha-2 Expansion Facilities.

| No | COMPONENT | Location | | Land Status | Acquired / Leased | Document | | Required Area | | | Total Area as per Certificate / IPPKH | Remarks | |
|----|-------------------|----------|----------------|----------------------------|-------------------|--|--|---------------|-----------|------------------------|---------------------------------------|--|---------------------------------------|
| | | Location | Well | | | Type | Available / Not yet | Length (m) | Width (m) | Area (m ²) | | | |
| 1 | Transmission Line | | | PTPN VIII Rancabolang | Acquired In 2006 | <ul style="list-style-type: none"> Approval letter to release HGU from PTPN to GDE issued by SOE Ministry Letter of release HGU from PTPN to GDE Receipt payment of compensation Certificate of the land | Available | | | | | Will use existing TL | |
| 2 | Power Plant | | | | | | Available | | | 3,178.54 | 151,650 m ² | Certificate No : HGB 00015 | To be built near existing power plant |
| 3 | Sub-station | | | PLN/ PTPN VIII Rancabolang | Acquired | | Available | | | | | | |
| 4 | Well pad 4 | Loc U | PTH-6A, 6B | PTPN VIII Rancabolang | Acquired In 2006 | | Available | | | | | | |
| | | Loc A | PTH-1C | PTPN VIII Rancabolang | Acquired in 2006 | | Available | | | | 21.290 m ² | Certificate No : HGB 00014 | |
| | | Loc W | PTH-5A | PTPN VIII Rancabolang | Acquired in 2006 | | Available | | | | 16.685 m ² | Certificate No : HGB 00006 | |
| | | Loc V | PTH-7A, 7B | Protected Forest | Leased | | Land Use Permit (IPPKH) valid until 2037 | Available | | | | 63.070 m ² | IPPKH |
| | | Loc G | PTH-4B, 4C, 4D | Protected Forest | Leased | Land Use Permit (IPPKH) valid until 2037 | Available | | | | 45.990 m ² | IPPKH | |
| | | Loc BB | PTH-9, 9A, 9B | Protected Forest | Not yet | None | Not yet | | | 25,000 | | Processing of new IPPKH will commence in October 2019. Estimated completion data for process – end 2021. | |

| No | COMPONENT | Location | | Land Status | Acquired / Leased | Document | | Required Area | | | Total Area as per Certificate / IPPKH | Remarks |
|---|------------------------|------------------|------|--|-------------------|--------------------------|---------------------|---------------|-----------|------------------------|---------------------------------------|--|
| | | Location | Well | | | Type | Available / Not yet | Length (m) | Width (m) | Area (m ²) | | |
| 5 | Pipeline & access road | Loc A to Loc W | | PTPN VIII Rancabolang | Leased | Leasing Agreement | | | | | 45,691m ² | Leasing agreement with PTPN VIII Rancabolang will expire in 2020. In the process of being extended for another 10 years. |
| | | Loc W to Loc V | | PTPN VIII Rancabolang / Protected Forest | Leased | Leasing Agreement/ IPPKH | | | | | | |
| | | Loc U to Loc GPP | | PTPN VIII Rancabolang | Leased | Leasing Agreement | | | | | | |
| | | Loc GPP to Loc G | | PTPN VIII Rancabolang / Protected Forest | Leased | Leasing Agreement/ IPPKH | | | | | | |
| | | Loc G to Loc BB | | Protected Forest | No | None | Not yet | | | 10,000 | | Processing of new IPPKH will commence in October 2019. Estimated completion data for process – end 2021. |
| Total additional land to be acquired/leased | | | | | | | | | | | 35,000 | |

Required area for well pad standard hole drilling is 100 x 100 m = 10,000 m², (including ponds and rig area); required area for production or injection well is 3 x 3 x 6 m = 54 m (Source: FS for Patuha and Dieng Expansion per 8 August 2019)

II. OBJECTIVES OF SOCIAL SAFEGUARDS MONITORING REPORT

18. The objective of monitoring report is to report on the implementation progress of land acquisition and resettlement activities periodically, including the implementation of livelihood restoration programs, to ensure that the activities are implemented as planned and that mitigating measures designed to address adverse social impacts are adequate and effective. The scope of the monitoring includes, but not limited to:
- i. Payment of compensation to all affected persons (APs) in various categories, according to the compensation policy described in the Social Safeguards Documents.
 - ii. Delivery of income restoration and social support entitlements.
 - iii. Public information dissemination and consultation procedures.
 - iv. Adherence to grievance procedures and outstanding issues requiring management's attention.
 - v. Priority of APs regarding the options offered.
 - vi. The benefits generated from the subprojects.
 - vii. Assess outcome and impacts of social safeguards activities on the standards of living of APs/customary communities

III. SOCIAL SAFEGUARDS PLANNING DOCUMENT IMPLEMENTATION PROGRESS

A. Dieng 2 Sub-Project

1. Consultation, Participation and Information Disclosure

19. **Consultation during Preparation of Resettlement Plan (RP).** A series of consultations has been conducted for the preparation of the RP. The first consultations with the APs, affected communities and stakeholders (local NGOs, Kabupaten agency representatives) were held in March 2019 at village offices. A total of 209 persons (163 men, 46 women) participated in the consultations. Consultations continued during the IOL and SES when focus group discussions (FGDs) were conducted with 77 persons (49 men, 28 women) to assess and discuss the resettlement impacts and possible income and livelihood restoration programs to mitigate the impacts (loss of land, loss of arable land). The second set of community consultations was held over 11-13 September 2019 at village offices. 178 participants (126 men, 52 women) attended the consultations. The consultations were to seek feedback on the assesment findings and proposed mitigation measures. Detailed consultaton can be seen in the draft RP for Dieng 2, it can be dowloaded in the following website <https://www.adb.org/sites/default/files/project-documents/52282/52282-001-rp-en.pdf>.

Table 4. Summary Consultation Held during Preparation of RP (Planning Stage).

| Consultation Topic | Date | Venue | Participants | | Key Issues |
|-------------------------------------|------------------------------|--------------------|--------------|----|---|
| | | | M | F | |
| Public Consultation 1 st | March 21 st 2019 | Pranten | 22 | 6 | <ul style="list-style-type: none"> • Purpose : to inform the project plan, potential impacts, and obtain feedback on the existing projects and planned project. • Some requests and concerns were raised by the communities: (i) that GDE needs to provide adequate compensation and ample notice if GDE will utilize its land used by people for farming; (ii) GDE to provide income restoration program to the communities near by the project areas; (iii) GDE needs to address impacts of water, air and noise pollution from Dieng Geothermal plant activities; (iv) the large steam pipelines spoil the view of the Dieng area which is a tourist attraction; (v) Pollution (leakages) that cause crops to die; (vi) more community members be given opportunity to work at GDE Dieng |
| | March 21 st 2019 | Kepakisan | 10 | 10 | |
| | March 22 nd 2019 | Karangtengah | 28 | 10 | |
| | March 22 nd 2019 | Dieng Kulon | 25 | 9 | |
| | March 23 rd 2019 | Bakal | 38 | 3 | |
| | March 23 rd 2019 | Sikunang | 16 | 6 | |
| Women Group FGD | August 21 st 2019 | GDE Dieng's Office | 0 | 21 | Discuss and formulate income restoration assistance (if applicable) and gender concerns |
| Youth Group FGD | August 21 st 2019 | GDE Dieng's Office | 21 | 7 | |
| Land Owners FGD | August 23 rd 2019 | GDE Dieng's Office | 4 | 0 | |
| Tenant Farmers FGD | August 23 rd 2019 | GDE Dieng's Office | 24 | 0 | (i) Tenant farmers acknowledged rightful GDE-ownership of the land, and were willing to surrend occupation of the land back to GDE as and when GDE required, (ii) all tenant farmers requested to be granted access to alternative land to lease in the event they lose access to the land currently |

| Consultation Topic | Date | Venue | Participants | | Key Issues |
|--|---------------------------------|---|--------------|----|--|
| | | | M | F | |
| | | | | | being cultivated; (iii) tenant farmers only have experience as farmers and farm labourers and are reluctant to embark on other forms of livelihood activities |
| Public Consultation 2 nd | September 11 th 2019 | Kepakisan | 19 | 3 | Common issues raised are (i) opportunities of jobs at GDE, community development programs to the communities, (ii). noise, community risks, water pollution/abstraction, impact during construction, (iii). GDE's support to women, (iv). The most critical issue was related to negative perceptions about project which were raised by the head coordinator of tenant farmers of GDE land, and former head of Karang Tengah Village. They assume the project will make residents suffer. Increasing of noise will disturb people because their settlement is located very close to proposed power plant. |
| | September 11 th 2019 | Sikunang | 16 | 10 | |
| | September 12 th 2019 | Bakal | 24 | 4 | |
| | September 12 th 2019 | Dieng Kulon | 21 | 4 | |
| | September 13 rd 2019 | Karangtengah | 36 | 23 | |
| | September 13 rd 2019 | Pranten | 10 | 8 | |
| Discussion with WWF (NGO) | August 20 th 2019 | WWF Office | 1 | 3 | Sharing information related to national policy related on geothermal, including advocay programs. |
| Discussion with WALHI | August 21 st 2019 | Trans TV Office | 2 | 2 | Discussion related to Walhi concerns related to geothermal development plan. |
| Discussion with ISDI (Inclusive and Social Development Initiative) | August 30 th 2019 | University Islam Sunan Kalijaga, Yogyakarta | | | Discussions concerning development challenges in the Dieng area. |

20. **Consultation during Land Clearing and Land Acquisition Implementation.** Consultation for Land Clearing process was started at July 15th 2020, the compensation itself was delivered at October 7th 2020. For the Land Acquisition process, as additional land is needed, GDE conducted consultation in parallel with Socio-Economic Survey in December 2020.

Table 5. Summary Consultation Held for Land Clearing and Land Acquisition Implementation.

| Consultation Type | Date | Venue | Participants | | Key Issues |
|---|--------------------------------|---|--------------|----|--|
| | | | M | F | |
| Social Impact Management Implementation | July 15 th 2020 | Ex Mess PLN site (Karangtengah Village) | 29 | 3 | Land occupying status as required in Presidential Regulation No. 62/2018 |
| Social Impact Management Implementation | July 16 th 2020 | Karangtengah Head Village's house | 17 | 3 | Status of 4 (four) people used to coordinates the occupying farmers |
| Verification on Result Objection | August 11 th 2020 | Ex Mess PLN site (Karangtengah Village) | 29 | 3 | There were 11 people objecting the result |
| Compensation Delivery | October 7 th 2020 | Official House of Batur Sub-Districts | 19 | 11 | Progress of Social Impact Management and its compensation delivery |
| Focus Group Discussion | December 16 th 2020 | House of Karangtengah Village Head | 10 | 3 | Socio-Economic Study |
| Discussion | December 23 rd 2020 | Dieng Office Meeting Room | 2 | 3 | Update land acquisition plan |
| Discussion | December 24 th 2020 | Dieng Office Meeting Room | 3 | 0 | Update land acquisition plan |

21. **Other Consultation.** In this period, GDE has also conducted consultation related to surface water utilization, project update to stakeholders, and local worker requirement.

Table 6. Summary of Others Consultation Related to The Project.

| Consultation Type | Date | Venue | Participants | | Key Issues |
|---------------------------|------------------------------|------------------|--------------|---|---|
| | | | M | F | |
| Surface Water Utilization | August 12 th 2020 | Sikunang Village | | | <ul style="list-style-type: none"> • <u>The issues raised by the participant</u> : The shallow river and causes of flooding. They proposed to recovery of the river level. • <u>GeoDipa respond</u> : GeoDipa provides the risk |

| Consultation Type | Date | Venue | Participants | | Key Issues |
|-------------------|--------------------|-----------------------------------|--------------|----|---|
| | | | M | F | |
| | | | | | and mitigation of surface water extraction data. |
| | August 13th 2020 | Kepakisan Village | 24 | 12 | <p>The issues raised by the participant :</p> <ul style="list-style-type: none"> •The risks of surface water extraction in an agricultural landscape •The opportunity for project related job <p>GeoDipa respond :</p> <ul style="list-style-type: none"> •GeoDipa provides the risk and mitigation of surface water extraction data •the update of project related to local employment |
| Project Update | November 12th 2020 | D'Qiano Meeting Room | 5 | 1 | Update project schedule to Regional Secretary of Central Java Province |
| Project Update | December 17th 2020 | Dieng Office Meeting Room | 21 | 3 | Update project schedule to <i>Forkompinca</i> (Sub-Districts Communities) |
| Project Update | December 17th 2020 | DPUPR Office | 3 | 2 | Update Project schedule to DPUPR Banjarnegara |
| Project Update | December 18th 2020 | <i>Disnaker</i> PMPTSP Office | 7 | 2 | Local worker requirement |
| Project update | December 29th 2020 | Dieng Office Meeting Room | 3 | 2 | Update project schedule to DPUPR Banjarnegara |
| Project Update | December 30th 2020 | Rumah Budaya, Dieng Kulon Village | 21 | 4 | <p>The issues raised by the participant :</p> <ul style="list-style-type: none"> •The latest Project Schedule •The Opportunity of local hire |

| Consultation Type | Date | Venue | Participants | | Key Issues |
|-------------------|------|-------|--------------|---|--|
| | | | M | F | |
| | | | | | <ul style="list-style-type: none"> •The Environment risk and mitigation <p>GeoDipa respond :</p> <ul style="list-style-type: none"> •Geodipa provides the latest project schedule •GeoDipa provides the latest status of project related to local hired. •GeoDipa provides the environment, health safety and social risk and mitigation |

22. **Information Disclosure.** The agree draft RP 2019 have been publicly disclose on ADB's website on November 2019. The summary of RP in form of project information booklet also been distributed to AHs/APs and community surrounding project on October 2019.

2. Land Acquisition for 6 Land Owners

23. GeoDipa has planned to acquire the land for additional 3,010 m² that will be required for a 10 m wide and approximately 301 m long corridor to serve as the Right-of-Way (ROW) the construction of a new pipeline and access road from Well pad 9 to the proposed site of the Dieng-2 power plant. As indicated in the draft RP 2019, the required land owned by six landowners. As the land to be acquired is small plot (3,010 m²), according to the Indonesian legal framework, land acquisition less than 5 Ha can be undertaken through direct transaction with the landowners.⁸

24. GeoDipa established a land clearing and land acquisition team which consist of PMU, General Affairs and Dieng Unit refer to SK037.SK/PST.00/GDE/XII/2019. GDE for conducting the land acquisition and land clearing. For acquisition the 3,010 m² GeoDipa LAT coordinated with the Banjarnegara District KATR/BPN and Banjarnegara Local Government, especially subdistrict and village office. The valuation of lost land and non-land assets has been carried out by the independent appraisal based on to the inventory of loss (IOL) indicated in in the draft RP Dieng (2019) on July – August 2020. As of December 2020 Geodipa LAT is continuing consultations with land owners regarding

⁸ see Presidential Regulation 148 of 2015.

willingness to sell. The consultations indicated that AHs asked for an irrational price, which was much higher than the price recommended by appraisal and the market price.

3. Land Clearing

25. As indicated in the draft RP Dieng (2019) a total of 4 Ha GeoDipa-owned land (ex Mess GDE site) will be cleared for the project. This site is located in Karang Tengah Village. The site has been leased on an annual basis to a farmers' group -*Kelompok Sadar Alam dan Tani "Merdada Sejahtera"* over the last 20 years. 23 tenant farmers (79 APs) will lose access to productive arable land which they have been leasing for between 10-20 years. The current land lease between the *KODIPA (GDE Cooperative) and the head of the 4 coordinators on behalf the farmer group*
26. Procedure for land clearing carried out following the procedure set forth in the Presidential Regulation No. 62/2018 with involvement of "Tim Terpadu" (Social Handling Team) established by Central Java Governor. The land clearing process have been completed by delivering compensation to the 23 AHs and 4 leasing coordinator on 7 October 2020. with detailed process was shown in the Table below.

Table 7. Land Clearing Activities.

| Activities | Date | Remarks |
|--|------------------|---|
| GeoDipa established a land clearance and land acquisition team which consist of PMU, General Affairs and Dieng Unit refer to SK037.SK/PST.00/GDE/XII/2019 | 30 December 2019 | |
| Submission of Request to Central Java Gov. to Established Integrated Team for Handing Social Impact for GDE project, the social impact handling plan is attached in the Request Letter | 19 February 2020 | The Letter attached in the Appendix A |
| Establishment of The "Tim Terpadu" for Social Impact Handling for Dieng unit 2 geothermal power plant development project and its secretariat by the Central Java Governor Decree No 590/30/2020 | 25 Juni 2020 | <ul style="list-style-type: none"> The integrated team headed by Secretary of the Central Java Province. The members are include Provincial and Banjarnegara District ATR/BPN, Head of Batur Subdistrict, Head of Karang Tengah Village and PT. GeoDipa LAT The Decree is attached in the Appendix B |
| The "Tim Terpadu" sent letter to inform APs regarding socialization and verification data for social impact handling for Dieng unit 2 project | 13 July 2020 | Letter given to Head of Batur Subdistrict and Karang Tengah Head of Village with request to be disseminated to APs |
| Dissemination of information about social impact handling for project purposes to the APs and leasing coordinator | 15 July 2020 | <ul style="list-style-type: none"> Attended by all 23 APs with involvement of four coordinator Venue : ex mess PLN at Karangtengah Village |
| Verification and validation of IOL | 15 to 16 | Based on the verification it was confirmed that 23 |

| Activities | Date | Remarks |
|---|---|--|
| data produced by ADB TA consultant by "Tim Terpadu" | July 2020 | APs as indicated in the draft RP Dieng 2 2019 are eligible to compensation as per Presidential Regulation no 62/2018, the 23 APs meet the following criteria (i) They do not have the rights to the land under their control (ii) they have controlled and use the GDE land for more than 10 years continuously (iii) they control and use the GDE land in good faith, and this is justified & recognized by land right owner (GDE) and head of village (iv) they have residence identity or information that is endorsed by the local district; |
| | 16 July 2020 | Four coordinators expressed their expectation to the integrated team to get involved in the project or GDE staff |
| Disclose the verification and validation result for APs correction if any | 29 July to 7 August 2020 | <ul style="list-style-type: none"> The verification and validation result posted in the office of Batur Sub district and Karangtengah Village, and at the site (ex PLN's building). 11 APs sent their complaint through the head of village and head sub district (as member of integrated team). They requested correction to the losses data, since some of their crops have not been included/identified as the affected asset. The head of village and head of sub district bring the complaint to the Head of "Tim Terpadu" to get resolution through the GDE's letter |
| Submission of the PT. Geo Dipa Energi (Persero) letter no : 421.1/DNG.1.00-GDE/VII/2020 according to the complaint from 11 APs to the Head of Tim Terpadu | 10 August 2020 | The letter is attached in Appendix C |
| Verification of the objection/complaint raised by 11 APs | 11 August 2020 | <ul style="list-style-type: none"> Verification was carried out by PT. Geo Dipa with involvement from the APs, Head of Batur Sub district, Head of Karangtengah Village and Dinas Perumahan, Kawasan Permukiman dan Lingkungan Hidup of Banjarnegara District as member Tim Terpadu Objection was accepted, and losses data was corrected |
| Revision of the data as per verification result | 14 August 2020 | |
| Valuation of compensation by independent appraisal | <ul style="list-style-type: none"> 21 July 2020 August 2020 | <ul style="list-style-type: none"> Refer to verification and validation data held in 15-16 July 2020 Revaluation of the compensation for the 11 aggrieved APs |
| Submission of valuation assessment by Independent | 31 August 2020 | |

| Activities | Date | Remarks |
|--|-------------------------|---|
| appraisal to the Head of the Integrated Team | | |
| Formulated the eligible APs (nominative list), amount and mechanism of compensation by the Integrated Team (legalized by the Central Java Governor Decree No: 590/52 / 2020) | 30 September 2020 | The Decree on the Nominative List of the AHs is attached in Appendix D |
| Payment of compensation to AHs | 7 October 2020 | <ul style="list-style-type: none"> • Venue : Batur Sub district Official Residence with applying Covid-19 protocols • Cash compensation given by bank transfer (BNI 46) • The integrated team facilitated in the opening of bank account without any cost • Any documentation related to payment process shall be recorded • APs allowed to harvest before land was cleared • Four Leasing Coordinator will be hired as project or GDE worker |
| Installation of Fences surrounding PLN's land | October – November 2020 | |

Source : Land Clearing Report prepared by The “Tim Terpadu” , October 2020

27. Valuation of Compensation by Independent Appraisal

- a. Refer to the Presidential Regulation No. 62/2018 and MASP Decree No. 6/2020 compensation will be provided to the loss of income on land use. Cost for land clearing will not consider since the APs allowed to harvest prior to the land cleared by GDE.
- b. Valuation methodology will refer to the Indonesia Valuation Standar – SPI 204/PPI 104 with some following consideration :
 - The object of the assessment are plants located in 23 plots of land covering an area of 40,254 m². Utilization of a land area of 40,254 m² are used for agricultural land
 - Considering the development of the surrounding area and the allotment that has been determined by the local government, the current land use for agricultural land is the Highest and Best Use (HBU)
 - Valuation will use Income Approach
- c. Valuation will use income approach “*which will be valued with net product market value of the crops for more than one cropping cycle to two years, based on type of crops, soil fertility and availability of replacement arable land*”. Since cultivation in the affected arable land is the APs main occupation, the loss of income will calculated based **on two years cropping cycle**.

28. Equivalent Assessment refer to the approved RP Dieng 2 2019

- a. The number and name of APs received compensation is the same with the APs listed in the RP Dieng 2, includes the four leasing coordinators.
- b. The entitlement provided to tenant farmers and leasing coordinator are in accordance to the entitlement set forth in the RP Dieng 2 2019, as shown as follow :

Table 8. Equivalent Assessment for the Entitlement.

| Affected Persons | Entitlement as per RP Dieng 2 | Entitlement as per the Integrated Team | Equivalent Result |
|--|---|--|--|
| Tenant Farmers (23 APs) | <ul style="list-style-type: none"> • Cash compensation for loss of crops income equivalent to a minimum of one year of net product market value. • APs are allowed to harvest prior to land clearing. | <ul style="list-style-type: none"> • Cash compensaton for loss of income equivalent to 2 years of net product market value • APs are allowed to harvest prior to land clearing | <ul style="list-style-type: none"> • Fully equivalent • The different amount of compensation was due to different types of crops planted on the affected area when verification was carried out by an integrated team |
| Leasing coordinator (4 APs) | APs given the opportunity for employment in project related job during construction | Four leasing coordinators will hire as GDE or project workers | Fully equivalent |
| Note : All of the APs will entitle to participate in the LRP | | | |

29. **Conclusion.** Based on the recommendation by “Tim Terpadu” and legalized by Central Java Decree, compensation was provided to eligible APs include all APs identified in the draft RP Dieng 2012 and the four leasing coordinators. The compensation received by the APs and four coordinators are fully comply with the entitlement set forth in the draft RP Dieng 2019, ie (i) The 23 tenant farmers entitle to get cash compensation for their loss of income equivalent to 2 years of net product market value and they allowed to harvest prior to land clearing. (ii) The amount of compensation was determined by the independent appraisal using the income approach and considering Highers and Best Use (HBU). The different amount of compensation (between the amount indicated in the RP) was due to different types of crops planted on the affected area when verification was carried out by an integrated team. (iii). Four leasing coordinators will hire as GeoDipa or project workers.
30. See the comparison of the APs, affected area and compensation received in the **Table 9 below.**

Table 9. Comparison of the Affected Persons, Affected Area, Affected Crops and Compensation.

| Name of APs | RP Dieng 2019 | | | Implementation by Integrated Team | | |
|-------------------------------|---------------|-------------|-------------------|-----------------------------------|---|-------------------|
| | Affected Area | Crops/Trees | Compensation (Rp) | Affected Area | Crops/Trees | Compensation (Rp) |
| H . Muhyib | 3,000 | Potatoes | 100,725,000 | 3,000 | Cabbage, onion, potatoes, wortel, chili | 107,375,364 |
| Selamet | 2,520 | Potatoes | 84,609,000 | 2,520 | Potatoes, onion, peanut, carrots | 94,216,360 |
| Darminto /Soleman | 2,500 | Potatoes | 83,937,500 | 2,500 | Carrots, potatoes, cabbage, onion, peanuts, taro, carica, chili | 100,292,335 |
| Gito | 2,500 | Potatoes | 83,937,500 | 2,500 | Cabbage, onion, peanut, flower | 69,029,177 |
| Mintono | 2,500 | Potatoes | 83,937,500 | 2,500 | Cabbage, potatoes, onion | 91,361,551 |
| Yunianto | 2,500 | Potatoes | 83,937,500 | 2,500 | Peanut, onion, carica, potatoes | 90,033,910 |
| Abdul Sukur | 2,500 | Potatoes | 83,937,500 | 2,500 | Onion, potatoes, carrots, peanut, chili,carica | 126,268,541 |
| Turmudi | 2,205 | Potatoes | 74,032,875 | 2,205 | Cabbage, potatoes, onion, chili, carrots | 78,680,721 |
| Kuryadi | 1,800 | Potatoes | 60,435,000 | 1,800 | Cabbage, peanuts | 52.029,969 |
| Arifin | 1,800 | Potatoes | 60,435,000 | 1,800 | Potatoes, onion, carrots | 76,837,879 |
| Sujito | 1,800 | Potatoes | 60,435,000 | 1,800 | Peanut, onion, carica, carrot taro | 61,858,060 |
| Mardi Daryanto | 1,680 | Potatoes | 56,406,000 | 1,680 | Cabbage, potatoes, onion, taro, chili | 59,345,085 |
| Mahtum/Mahtom | 1,617 | Potatoes | 54,290,335 | 1,617 | Onion, carrots, potatoes, chili, peanut | 59,360,765 |
| Juhari | 1, 617 | Potatoes | 54,290,335 | 1, 617 | Cabbage, onion, chili | 39,033,254 |
| Haryadi/Sugeng Haryadi | 1, 320 | Potatoes | 44,319,000 | 1, 320 | Potatoes, carrots, onion, chili, peanut, taro | 49,069,252 |
| Ngadi Sukur /Slamet Saefulloh | 1, 200 | Potatoes | 40,290,000 | 1, 200 | Cabbage, onion, carica, corn, taro, shili, eucalyptus | 37,091,148 |
| Soib/Musaif | 1,020 | Potatoes | 34,246,500 | 1,020 | Cabbange, carrots, peanuts, | 41,498,397 |

| Name of APs | RP Dieng 2019 | | | Implementation by Integrated Team | | |
|----------------|---------------|-------------|-------------------|-----------------------------------|---|-------------------|
| | Affected Area | Crops/Trees | Compensation (Rp) | Affected Area | Crops/Trees | Compensation (Rp) |
| | | | | | carica, chili, potatoes, onion | |
| Komaludin | 1,020 | Potatoes | 34,246,500 | 1,020 | Onion, lemongrass, carrot, carica, chili, cabbage, potatoes | 44,241,468 |
| Tuyono/Amin | 960 | Potatoes | 32,232,000 | 960 | Potatoes, onion, cabbage, carrots | 34,039,623 |
| Sartono | 840 | Potatoes | 28,203,000 | 840 | Potatoes, onions, carrots, carica, taro, peanuts, chili, lemongrass, celery, eggplant, coffee | 35,089,893 |
| Siib/Ibnu Hadi | 840 | Potatoes | 28,203,000 | 840 | Carrots, potatoes, chili, onion | 33,836,622 |
| Surono | 640 | Potatoes | 21.488.000 | 640 | Onion, cabbage, carrots | 23,072,928 |
| Marzuki | 1,875 | Potatoes | 62.953.125 | 1,875 | Onion, carica, cabbage | 69,086, 696 |
| Total | | | 1,355,677,089 | | | 1,472,838,999 |

4. Additional Land Acquisition

31. Geo Dipa formally informed, through the letter to ADB ref no. 275/PST.00-GDe/VIII/2020 dated 14 August 2020, that according to the final design the additional land was needed to be used for : (i). drilled new wells in the expansion area of well pads 7,9 and 30, and (ii). temporary road access for material and equipment to wellpads 30. As specified in the draft RP Dieng 2 2019, the updated RP need to be prepared following this additional land acquisition. Agreed during the pre inception mission on September 2020, ADB will hire international social safeguards expert and continue using existing national expert to support RP Updating while GeoDipa will provide all necessary data and results of consultations. Following are some actions have been taken in order for update the RP.
32. GeoDipa conducted a door to door consultation to the land owners who potentially will be affected by the new wells and temporary access road. The consultations was done in 28 September to 1 October 2020, with involvement of Village Office and community leader. In this consultations, GeoDipa also seek the feedback from potential AHs/APs to the project plan and their initial willingness to sell their land.
33. GeoDipa in coordination with Banjarnegara District KATR/BPN conducted measurement of the land to be acquired on 26 and 27 November 2020. Based on the measurement it was indicated there are 25 parcels of land with total affected area 20,280 m² owned by 25 land owners will be affected.
34. Socio economic survey (SES) to the 25 land owners was carried out by enumerators in December 2020. Data collected during the SES being tabulated and processed.
35. Updated Project Components and Land Requirements for the Proposed Dieng Geothermal Power Plant Expansion :

Table 10. Updated Project Components and Land Requirements for the Proposed Dieng Geothermal Power Plant Expansion.

| NO | INFRASTRUCTURE COMPONENT | LOCATION | | | OWNER OF LAND | REQUIRED AREA # |
|----|--------------------------|----------|---------|---------------|---------------|------------------------|
| | | LOCATION | WELL | VILLAGE | | AREA (M ²) |
| 1 | Well | Pad 7 | SLR-7D | Karang Tengah | Private | ± 4,500 |
| 2 | Well | Pad 9 | SLR-9E | Karang Tengah | Private | ± 11,000 |
| | | | SLR-9D | | | |
| | | | SLR-9C | | | |
| 3 | Well | Pad 30 | SLR-30B | Karang Tengah | Private | ± 3,800 |
| 4 | Rig Access Road | | | Karang Tengah | Private | ± 600 |

5. Livelihood Restoration & Community Development Program

36. Based on approved RP 2019, income and livelihood restoration will be provided to severely APs and vulnerable APs to ensure their living standard will not be worse off due to the project. The Inventory of Losses (IOL) and Social-Economic Survey (SES) found that there are 24 potentially severely affected households (86 persons) and 14

vulnerable household (47 persons). The programs include opportunity of employment during construction, vocational training, and scholarships, procurement of equipment and materials, and capacity building for the improvement of their current micro-enterprises / businesses. The activities will be implemented over a period of three years after compensation payment and during construction and will be monitored and reported on bi-annually to ensure effective restoration of livelihoods and program sustainability. The income and livelihood restoration program will also be expanded to the APs affected temporarily during construction and residents living near to project areas as project benefits. Proposed LRP outlined in the RP 2019 are shown in the table below :

Table 11. Livelihood Restoration Activities.

| TYPE OF ACTIVITY | TARGET PERSON / GROUP | Number | |
|---|-------------------------------|--|--|
| | | Severely AHss and vulnerable AHs | GDE's Neighboring Communities ⁹ |
| 1. Employment for unskilled labour at GDE Dieng (inc. project related work) | AH members, community members | 24 Vulnerable/Severely HH members from Karang Tengah and 4 coordinators | 30 community members from 6 villages |
| 2. Scholarships and board and lodging allowance | Students from AHs | 24 students. | 30 students from 6 villages |
| 3. Value chain analysis, development for carica processing and marketing (including permits/certification). | Women | Value chain analysis will benefit all carica home industries. 24 Vulnerable/Severely HH members | 6 groups in 6 villages (5-7 people per group) ~ 30–42 people |
| 4. Value chain analysis and development for processing and marketing of potato crisps and crisps from tubers (cassava, yam, sweet potato) including permits (certification) | Women | Value chain analysis will benefit all similar home industries 24 Vulnerable/Severely HH members | 1 group per village (6 people per group) – 36 people |
| 5. Training, mentoring for the following: a) mechanic, b) welding, c) sewing d) craft | Various | 24 Vulnerable/Severely HH members | 30 persons for types of training (from all 6 villages). |

37. The Livelihood Restoration Assessment also recommended some activities to reorient the Community Development (ComDev) program so as to be more strategic and responsive to the political-economic dynamics and existing livelihood security

⁹ Vulnerable households.

challenges within the Dieng economy. Also will include : (i) Provision of 12 new wells (2 wells per village) as an immediate response to potable water supply issues (to be implemented in 2020), (ii). Provision of periodic free health screening and follow-up medical services (from 2020 onwards), and (iii). Consolidation of waste (garbage) recycling, training and marketing of products for an existing group in Sikunang Villages (2020). Livelihood to be delivered under GDE community development program.

38. Considering the pandemic Covid situation, the training programs outlined in the draft RP Dieng 2 2019 will postpone to be implemented in 2021. Some LRP programs have been implemented during 2020 are as follows :

- Development of wells in the six affected villages
- Social assistance programs for village nearby Dieng Unit 2 project locations. The programs are include :
 - i. Providing staple foods
 - ii. Support local hospital (Puskesmas); Provide covid 19 protection equipment such as such as medical disposable masks, N95 masks, medical personal protective equipment (may include items such as gloves, safety glasses and disposable hand gloves), non-contact thermometer devices, hand sanitizer, and disinfectant spray)
- The Cultivator Farmer Coordinator has now been given a job, according to contract number 243 PKWT / KDP-DNG / X / 2020 on October 1, 2020.

6. Grievance Redress Mechanism

39. When the Integrated Team carried out verification of detailed measurement resulted by the PPTA consultant, there are 11 AHs (tenant farmers) raised complaints to the head of village ((as member of integrated team). They requested correction to the losses data, since some of their crops has not be included/identified as the affected asset. The complaints was formally forwarded/submitted to the Head of Integrated Team through the letter No. 421.1/DNG.1.00-GDE/VII/2020 (dated 10 August 2021). Verification of data was carried out in 14 August 2020. Verification of data was held on August 11th – 12th, 2020. In accordance with the third Dictum of the Decree of the Governor of Central Java Number: 590/30 of 2020, PT. Geo Dipa Energi (Persero) carried out verification and field checks together with 11 (eleven) aggrieved AHs with involvement of Head of Batur Sub district, Head of Karangtengah Village and Dinas Perumahan, Kawasan Permukiman dan Lingkungan Hidup of Banjarnegara District as member Tim Terpadu. As the result, the objections have been accommodated and approved by the Integrated Team, and the Team made corrections as shown in Table 10 below:

40. The provisions of article 13 paragraph (1) Regulation of the Minister of Agrarian and Spatial Planning / Head of the National Land Agency Number 6 of 2020 concerning Provisions for the Implementation of Presidential Regulation Number 62 of 2018 concerning Community Social Impacts Management in the Context of Provision of Land for National Development, if there are parties who object on the results of data collection, verification and validation, the party concerned may submit objections to the Chairman of the Integrated Team within a period of 7 (seven) days from the results date of data collection, verification and validation are announced. The handling of complaints from the 11 tenants farmers are compliance with the mechanism in the regulations.

Table 12. Verification and Validation of Community Social Impacts Management in the Context of Providing Land for National Development of Dieng Geothermal Power Plant Unit 2 in Karangtengah Village, Batur District, Banjarnegara Regency.

| No. | Cultivator Name | Based those are announced | Based on data that the community object to (Adding Data) | Verification Results (On Site Checking) |
|-----|-------------------|---|---|---|
| 1. | Slamet | <ul style="list-style-type: none"> - Potato - Leek - Nuts | <ul style="list-style-type: none"> - Carrot | <ul style="list-style-type: none"> - Carrot |
| 2. | Soleman | <ul style="list-style-type: none"> - Carrot - Potato - Cabbage / Kobis - Leek - Nuts - Taro | <ul style="list-style-type: none"> - Carica - Dieng Chili - Dieng Nuts | <ul style="list-style-type: none"> - Carica - Dieng Chili - Dieng Nuts |
| 3. | Sugito | <ul style="list-style-type: none"> - Cabbage/ Kobis - Leek - Chili - Flower | <ul style="list-style-type: none"> - Carrots (seeds) | <ul style="list-style-type: none"> - Carrots (seeds) |
| 4. | H. Yuniyanto | <ul style="list-style-type: none"> - Dieng Nuts - Leek - Carica | <ul style="list-style-type: none"> - Potatoes (freshly harvested) - Dieng Chili | <ul style="list-style-type: none"> - Potatoes (freshly harvested) - Dieng Chili |
| 5. | Abdul Sukur | <ul style="list-style-type: none"> - Leek - Potato - Carrot - Nuts - Chili - Carica | <ul style="list-style-type: none"> - Dieng Chili Seedlings | <ul style="list-style-type: none"> - Dieng Chili Seedlings |
| 6. | Turmudi | <ul style="list-style-type: none"> - Cabbage / Kobis - Potato - Leek | <ul style="list-style-type: none"> - Dieng Chili - Carrot | <ul style="list-style-type: none"> - Dieng Chili - Carrot |
| 7. | Slamet Syaefulloh | <ul style="list-style-type: none"> - Cabbage / Kobis - Leek - Carica - Corn - Taro - Chili | <ul style="list-style-type: none"> - Eucalyptus Wood | <ul style="list-style-type: none"> - Eucalyptus Wood |
| 8. | Musa'if | <ul style="list-style-type: none"> - Cabbage / Kobis - Carrot - Carica | <ul style="list-style-type: none"> - Potato - Leek | <ul style="list-style-type: none"> - Potato - Leek |

| No. | Cultivator Name | Based those are announced | Based on data that the community object to (Adding Data) | Verification Results (On Site Checking) |
|-----|-----------------|---|---|---|
| | | <ul style="list-style-type: none"> - Taro - Chili | | |
| 9. | Komaludin | <ul style="list-style-type: none"> - Leek - Lemongrass - Carrot - Carica - Chili - Cabbage / Kobis | <ul style="list-style-type: none"> - Potato | <ul style="list-style-type: none"> - Potato |
| 10. | Sartono | <ul style="list-style-type: none"> - Potato - Leek - Carrot - Carica - Taro - Nuts - Chili - Lemongrass | <ul style="list-style-type: none"> - Celery - Dieng Eggplant - Coffee Tree | <ul style="list-style-type: none"> - Celery - Dieng Eggplant - Coffee Tree |
| 11. | Surono | <ul style="list-style-type: none"> - Leek - Carrot - Cabbage / Kobis | <ul style="list-style-type: none"> - Potato | <ul style="list-style-type: none"> - Potato |

Table 13. Summary of Grievance/Complaints Received and Resolution Status.

| Village | Complaint/ Grievance Topic | Number of Complaint/ Grievance Received | | Status of Grievances | | |
|---------------|---|---|---|----------------------|---------------|--|
| | | #of complaint from previous monitoring period | # of complaint received within this monitoring period | # Resolved | # of On going | Remark |
| Karang tengah | Inventory of losses (type of affected plants) | 0 | 11 AHs (tenant farmers) | Resolved | | Complaints received in 10 August 2020, and resolved in 14 August 2020. |

B. Patuha 2 Sub Project

1. Consultation, Participation and Information Disclosure

41. **Consultation during Preparation of the Due Dilligence Report (DDR)** . Stakeholder consultations I were conducted with local communities in the area surrounding the Patuha Geothermal complex in March 2019. No specific concerns were raised regarding potential negative impacts of Patuha-2 on local people's livelihoods, however, participants did articulate a list of complaints ¹⁰. Stakeholder consultation II were conducted out with local communities in the three affected villages in September 2019. Participants supported the project, however some issues and expectations were raised by the participants which were almost the same as issues and expectations raised in the first consultation. The expectations of the communities include; (i) GDE to provide opportunities for communities especially youth to work at GDE (during project construction and operation) and support of GDE to improve their skills so they can access job opportunities. Information on the job opportunities is provided through village offices; (ii) GDE to continue providing community development program by considering the needs of communities including youth and women group; (iii) GDE to properly mitigate impacts during construction including increasing noise and dust.
42. Other consultation held related to the project can be seen in the table below.

Table 14. Summary of Consultation held for Patuha 2 Sub-Project.

| Consultation Type | Date | Venue | Participants | | Key Issues |
|-----------------------|--------------------------------|-------------------------------------|--------------|----|---|
| | | | M | F | |
| Project Public Expose | November 4 th 2020 | Grand Sunshine Ballroom, Soreang | 55 | 19 | Update project schedule to <i>Forkompinda</i> (Districts Communities) |
| Project Update | November 11 th 2020 | <i>Diskesbangpol</i> Office | 86 | 3 | Local worker requirement |
| Project Update | December 3 rd 2020 | Sindang Reret Meeting Room, Ciwidey | 40 | 3 | Update project schedule to <i>Forkompinca</i> (Sub-Districts Communities) |
| Project Update | December 23 rd 2020 | Grand Sunshine Rooftop | 18 | 2 | Update project schedule to Media |

43. **Information Disclosure** . Approved DDR has publicly disclosed in the ADB website on November 2019. The summary of DDR in the form of project information booklet (PIB) in bahasa Indonesia have also distributed to the community of three villages surrounding Patuha 2 project, i.e village of Sugihmukti, Alamendah and Panundaan by October 2019.

¹⁰ disturbances and damage caused by the regular passage of heavy vehicles in and out of the Patuha site, insufficient absorption of local manpower by GDE, and various other issues e.g. incomplete status of road construction assistance (1.2 km) in Alamendah Village

2. Implementation of Corrective Action Plan

44. Land acquired and leased from PTPN VIII Rancabolang; Leasing of PTPN VIII Rancabolang land for pipeline lines will expire in December 2020. The procedure of renewal extension is refer to the GDE Director Decree No. 014.2.SK/PST.00-GDE/VI/2015 concerning Standar Operation and Procedures, section 18 on Procedure of Procurement and Borrowing of Plantation Land. A principle permit on the renewal extension of land lease was signed by the PTPN 's director on 25 October 2020. Based on this principle permit, PTPN agreed to renew the extension for the next 10 years. PT. Perkebunan Nusantara (PTPN) VIII Rancabolang has been approved with the addendum agreement No.: PRJ/III.4/1876/XI/2020; 029/PJ/PST.00-GDE/XI/2020 on 26 November 2020, the validity period remains until December 16 December 2030.
45. Issuance of IPPKH; Land to be acquired is for two components: (i) Proposed new wellpad (for 3 new wells) at Loc BB, and (ii) proposed new right-of-way (ROW) for new pipeline and access road from Loc BB to Loc G. The location of both these components is in protection forest. The required land can be leased from Perum Perhutani.
46. The majority of land required for the Patuha Unit 2 is owned by GDE; additional land required is located in the forest area and the tea plantation with no occupation or use by people. Due to the recent changes in the process of IPPKH submission from Minister of Environment & Forestry (MoEF) to the Capital Investment Coordinating Board (BKPM) through Online Single Submission (OSS), then the complete document of IPPKH permit has been submitted on 1 October 2020 to BKPM. The permit is expected to the issued in January with the following details:
 1. Geo Dipa Energi applied for a Borrowing and Use of Forest Area Permits (IPPKH) through an online submission system (OSS) and an IPPKH has been issued with a commitment dated 29 July 2019.
 2. Geo Dipa Energi obtained the technical considerations for the plan to use the forest area from Perum Perhutani number 0044 / 044.3 / SEKPER / DIR / 2020 dated February 24, 2020.
 3. Geo Dipa Energi obtained a recommendation from the Governor of West Java on the plan to use the forest area number 522/6 / 28.2.03.0 / DPMPSTSP / 2020 dated 22 June 2020.
 4. Geo Dipa Energi submitted a letter to the Minister of Environment and Forestry of the Republic of Indonesia Cq Head of BKPM/ Capital Investment Coordinating Board on 9 September 2020 via letter no. 320 / PST.00-GDE / IX / 2020.
 5. Once the forestry replacement land is determined, PMU will start the survey for preparing a resettlement plan.

3. Community Development Program

47. GDE implements a Community Development (ComDev) Program in Patuha as part of its corporate social responsibility . Based on consultations with local communities conducted in March and September 2019, GDE will expand and improve delivery of its Community Development program to the communities of Alamendah, Sugih Mukti and Panundaan Villages under the Patuha-2 sub-project as part of its project benefits sharing objective. One program out of 8 community development programs outlined in the DDR has been implemented in 2020, i.e Identification of vendor opportunities for local entrepreneurs or via partnership agreement with Village Governments or Village

BUMDES, a community assisting in the development of Badan Usaha Milik Desa (Village Business Unit) was held on May-June 2020 period in Sugihmukti Village. Implementation for other community development program will be started in early 2021.

4. Grievance Redress Mechanism

48. A GRM established in line with the subproject scope to receive, investigate and respond in a timely manner to any complaints or grievances raised by affected person and others. No complaint was received as of December 2020.

Table 15. Summary of Grievance/Complaints Received and Resolution Status.

| Village | Complaint/ Grievance Topic | Number of Complaint/ Grievance Received | | Status of Grievances | | |
|---------|----------------------------|---|---|----------------------|---------------|--------|
| | | #of complaint from previous monitoring period | # of complaint received within this monitoring period | # Resolved | # of On going | Remark |
| - | - | - | - | - | - | - |

IV. Institutional Support to Social Safeguards

A. Staff Support to Ensure Compliance

49. A Project Management Consultant (PMC) will be recruited and will include an international and a national Social Safeguards / Resettlement. The consultants will support the Social Safeguards Assistant Manager, social safeguard staff in Dieng, GDE's Land Acquisition Team and CSR Division in the implementation of land acquisition and involuntary resettlement activities, delivery of Livelihood Restoration programs, ComDev Reorientation activities, and monitoring. However, as of December 2020, the procurement of the PMC was not completed, and mobilization of the PMC is delayed where one implication is the delay in the preparation of this semi-annual report.
50. Capacity building . One of the efforts to fill the gap in the delay in the mobilization of the PMC, a safeguards induction, was conducted by ADB on 12 November 2020. The objective of the saeguards inducton was to improve the understanding of GDE (PMU, and BoD/BoC as well as other stakeholders) on ADB and project safeguard and gender action plan in GPGP. In particular to improve the understanding of specific safeguard requirement, as well as gender actions and targets in GPGP. The main output of safeguard and gender induction is for GDE personnel to have a common understanding on safeguard requirements and gender action plan for the project. The indcution was conducted by virtual and participated by 50 participants, which 21 of them are woman. The agenda disseminated related to the social safeguards was includes :
- ADB Project Cycle and Involuntary Resettlement Activities, (including Requirement and Procedure for RP Update).
 - IR and IP sub project screening and required social safeguards planning document.
 - Government of Indonesia (GoI) Laws and Regulations on Land Acquisition.
 - ADB SPS 2009 on Involuntary Resettlement (Provisions and Principle).

- Gap Analysis of GoI Laws and Regulations and ADB SPS 2009 on Involuntary Resettlement and Project Resettlement Principle.
- Meaningful consultation and disclosure with special attention to gender and vulnerable groups.
- GRM.
- Monitoring.
- Livelihood restoration program.

B. Funds Availability and Sourcing and Limitations to RP Implementation

51. Availability of land acquisition and land clearing budget was not be a limitation of RP implementations. Compensation for tenant farmers has been provided timely.

V. Other Concerns and Notations

A. Loan Covenants Compliance Analysis

52. Below is the assessment of compliance with loan covenants related to social safeguards aspects.

Table 16. Loan Covenants Compliance Analysis (as of 31 December 2020).

| Para No. | Description | Compliance result/Issues |
|---------------------------|--|--|
| Schedule/Article 4 | | |
| Para 15 | The Borrower shall ensure that all land and all rights-of-way required for the Project are made available to the Works Contractor in accordance with the schedule agreed under the related Works Contract and all land acquisition and resettlement activities are implemented in compliance with (a) all applicable laws and regulations of Indonesia relating to land acquisition and involuntary resettlement; (b) the Involuntary Resettlement Safeguards; and (c) all measures and requirements set forth in the RPs and the DDR, and any corrective or preventative actions set forth in the Safeguards Monitoring Report. | Complied with Land clearing has been done in October 2020, following Resettlement Plan and in accordance with the Presidential Regulation no. 62/2018. Land acquisition is on negotiation with landowner. |
| Para 16 | Without limiting the application of the Involuntary Resettlement Safeguards, the RPs, or the DDR the Borrower shall ensure that no physical or economic displacement takes place in connection with the Project until: (a) compensation and other entitlements have | Complied with Clearing and protection of area by fenced of ex PLN's land was carried out after payment of compensation was delivered to the tenant |

| | | |
|--|--|--|
| | <p>been provided to affected people in accordance with the RPs and the DDR; and</p> <p>(b) a comprehensive income and livelihood restoration program has been established in accordance with the RPs and the DDR.</p> | <p>farmers (AHs) and four leasing coordinator hired as GDEs' workers.</p> <p>No commencement of civil works yet</p> |
| <p>Safeguards - Indigenous Peoples</p> | | |
| <p>Para 17</p> | <p>The Borrower shall ensure that the Project does not have any indigenous people's impacts within the meaning of the SPS. If due to unforeseen circumstances, the Project has indigenous people's impacts, the Borrower shall take all steps necessary or desirable to ensure that the Project complies with all applicable laws and regulations of Indonesia and with the SPS.</p> | <p>N/A</p> <p>Based on ADB Safeguard Assessment the INO GPGP is included in the category C for indigenous people, in which there is no indigenous people reside in the project location. GeoDipa committed to follow the ADB SPS.</p> |
| <p>Human and Financial Resources to Implement Safeguards Requirements</p> | | |
| <p>Para 18</p> | <p>The Borrower shall make available necessary budgetary and human resources to fully implement the EMPs, the RPs and the DDR.</p> | <p>Being comply with</p> <p>Payment of compensation for tenant farmers has delivered timely</p> <p>Social Safeguards Officer has been appointed at the PMU, consisted of 5 personnels in PMU HO</p> <p>The social safeguards consultants under PMC mobilization awaiting for completion of the procurement</p> |
| <p>Grievance Redress Mechanism</p> | | |
| <p>Para 19</p> | <p>The Borrower shall ensure that a safeguards grievance redress mechanism acceptable to ADB has been established and is maintained in</p> | <p>Being complied with</p> <p>GeoDipa developed SOP in</p> |

| | | |
|--|--|--|
| | <p>accordance with the provisions of the IEEs, the EMP, the RPs, the DDR and the PAM, to consider safeguards complaints.</p> | <p>regard to the GRM and has been reviewed and accepted by ADB expert consultant. GeoDipa commit to follow the ADB SPS. GRM is already established on September 10th, 2020 with 034.SK/PST.00-GDE/IX/2020</p> <p>Complaints received from the 11 tenant farmers has been resolved timely and accepted by AHs.</p> |
|--|--|--|

Safeguards - Related Provisions in Bidding Documents and Works Contracts

| | | |
|-----------------------|---|--|
| <p>Para 20</p> | <p>The Borrower shall ensure that all bidding documents and Contracts for Works contain provisions that require Contractors to:</p> <p>(a) comply with the measures relevant to the Contractor set forth in the applicable IEE, the EMP, the RP, and the DDR (to the extent they concern impacts on affected people during construction), and any corrective or preventative actions set forth in a Safeguards Monitoring Report;</p> <p>(b) make available a budget for all such environmental and social measures;</p> <p>(c) provide the Borrower with a written notice of any unanticipated environmental, resettlement or indigenous peoples risks or impacts that arise during construction, implementation or operation of the Project that were not considered in the applicable IEE, the EMP, the RP, and the DDR;</p> <p>(d) adequately record the condition of roads, bridges, agricultural land, houses and other infrastructure prior to starting to transport materials and construction; and</p> <p>(e) reinstate pathways, roads, bridges, other local infrastructure, and agricultural land to at least their pre-project condition upon the completion of construction.</p> | <p>Complied with</p> <p>All ADB financed contracts procurement is following the ADB Procurement Policy and Regulations. The process and implementation of the procurement process is closely supported by ADB procurement consultant and under guidance of ADB Procurement & Safeguard Specialist and Technical Assistance. A specific clause related to the contractual obligation on to the social safeguards was provided in the bidding documents, and it's following the RP and or DDR.</p> |
|-----------------------|---|--|

Safeguards Monitoring and Reporting

| | | |
|----------------|--|--|
| Para 21 | <p>The Borrower do the following:</p> <p>(a) submit semi-annual Safeguards Monitoring Reports to ADB and disclose relevant information from such reports to affected persons promptly upon submission;</p> <p>(b) if any unanticipated environmental and/or social risks and impacts arise during construction, implementation or operation of the Project that were not considered in the IEEs, the EMPs, the RPs, and the DDR promptly inform ADB of the occurrence of such risks or impacts, with detailed description of the event and proposed corrective action plan; and</p> <p>(c) report any actual or potential breach of compliance with the measures and requirements set forth in the EMPs, the RPs, and the DDR promptly after becoming aware of the breach.</p> | <p>Being complied with</p> <p>The semi-annual environmental safeguards report will be submitted Q2 2021. As for the social safeguards report, it will be submitted in Q2 2021.</p> |
|----------------|--|--|

B. Compliance to Social Safeguards Policy Principles

53. Compliance assessment in accordance to the project resettlement principles set forth in EARR's Resettlement Customary Community Development Frameworks (RCCDF) are shown in the following table

Table 17. Social Safeguards Project Principles Compliance Analysis (as of 31 December 2020).

| No | Social Safeguards Project Principle- refer to <i>RP Dieng and DDR Patuha</i> | Compliance Assessment |
|----|--|--|
| 1 | Avoid involuntary resettlement as much as possible. If this is not possible, impacts shall be minimized by exploring project and design alternatives. Efforts to minimize resettlement impacts have been taken by GDE through; (a) using GDE's lands for Dieng – 2; only 3,010 m ² additional land will be acquired for the sub-project through negotiated land acquisition; and (b) apply use of underground transmission cable for the construction of the transmission line along approximately 6 Km from the proposed Dieng Unit 2 Power Plant to the | <p>Comply</p> <p>Designs are optimized to minimize IR impacts. Most of the expansion of wellpads for Dieng2 and Patuha 2 are on the GDE's lands.</p> <p>The substations for Dieng 2 substation for Deng 1.</p> <p>A RP for Dieng 2 and the DDR for Patuha 2 has been developed based</p> |

| No | Social Safeguards Project Principle- refer to RP Dieng and DDR Patuha | Compliance Assessment |
|-----------|---|--|
| | existing sub-station. Efforts to minimize resettlement impact will continue during implementation. | on a social impact assessment of all APs and a mitigation plan is included. |
| 2 | Screen sub-project components during feasibility study or before preparation of resettlement plan to identify involuntary resettlement impacts and risks and the likelihood of impacts per subproject activity | Comply Social Impact Assessment (SIAs) have been carried out during subproject preparation with attention paid to the participation of women and other vulnerable groups. |
| 3 | Carry out culturally appropriate and gender-sensitive social impact assessments (SIA) to assess potential impacts on APs particularly with affected vulnerable groups. | Subproject screening was conducted in the early stage of SIAs |
| 4 | Conduct meaningful consultations with affected APs, stakeholders, concerned NGOs, and community groups to solicit their participation across land acquisition and involuntary resettlement process and monitoring. Inform APs on the land acquisition and involuntary resettlement process, their entitlements, and compensation and assistance options. Pay attention to the need of vulnerable groups, especially those below the poverty line, the landless, the elderly, women and children, and those without legal title to land and ensure their participation in consultations. | Comply Consultations have been carried out during preparation of social safeguards planning documents involving APs, community surrounding, CSOs, NGO and relevant institutions within local government. Consultations will be continued prior and during construction |
| 5 | Establish a grievance redress mechanism to receive and facilitate the affected persons' concerns | Partially Comply A specific GRM has been outlined in the RP and DDR, but GDE stil on process to appointed the focal persons. Complaint received from the tenant farmers has adressed properly by GDE |

| No | Social Safeguards Project Principle- refer to RP Dieng and DDR Patuha | Compliance Assessment |
|-----------|--|---|
| 6 | Improve or at least restore the livelihood of the APs through (a) land-based income and livelihood program; (b) replacement of assets with equal or higher value; (c) compensation at full replacement cost for lost assets; and (d) additional assistance through benefit sharing where possible. | Partially Comply A livelihood restoration program (LRP) has been outlined in the RP for the Dieng 2 and Community Development for Dieng 2 subproject; however its implementation mostly was delayed to 2021 |
| | Assist and compensate APs without title or any recognizable legal rights to land for non-land assets at replacement cost | Comply GDEs provided compensation to the tenant farmers utilized GDE's at replacement cost. Amount of compensation was recommended by independent appraiser |
| | Pay compensation for lost land and non-land assets prior to physical or economic displacement. Civil works will not commence until APs are fully compensated, and other entitlements take place | Comply No commencement of civil construction yet. Payment of compensation to the tenant farmers has been provided. |
| | Disclose the RP document and its updates, if required to the APs and other stakeholders in an accessible place and a form and understandable language. The RP will be disclosed on project and ADB's website. ^[1] _[SEP] | Partially comply The RP 2019 for Dieng 2 and The DDR for Patuha 2 has been disclosed in the ADB website, but not in the GDEs website yet The summary of RP and DDR in form of project information booklet (PIB) also been dissemination to AHs and other relevant stakeholders. |
| | Negotiated land acquisition will follow procedure in a transparent, consistent, and equitable manner principles and be confirmed through written record and verified by an independent third party | N/A Land acquisition mechanism will apply IR principle |

| No | Social Safeguards Project Principle- refer to <i>RP Dieng and DDR Patuha</i> | Compliance Assessment |
|-----------|--|--|
| | Monitor implementation of the resettlement planning and resettlement outcomes and impacts on the standards of living of APs. Disclose the monitoring reports on the project's website and make it available on the project office | Partially comply Social Safeguards Semi annual report being prepared and will be submitted in June 2021. |
| | The Sub-project will not issue the notice to proceed (NTP) for any construction works until full payment has been fully disbursed to all APs and compensated APs have cleared the acquired land and harvested their crops in a timely manner | Comply Clearing of the GDE's land (ex PLNS land) was carried out after tenant farms received compensation and four leasing coordinator hires as GDE's workers |

C. Compliance to the Entitlement

54. Compliance assessment in accordance to the entitlement matrix set forth in the approved Resettlement Plan or Dieng 2 subproject are shown in the following table

Table 18. Compliance Assessment to The Entitlement Matrix as of December 2020.

| NO. | TYPE OF LOSS | ENTITLED PARTY / PERSON | ENTITLEMENT | COMPLIANCE ASSESSMENT |
|-------------------------|--|--|---|-----------------------|
| I. Loss of Land | | | | |
| 1. | Loss of land, including agricultural and residential land <u><i>Applies to land acquisition</i></u> | Those who have formal legal rights or those whose claims over the land is recognised as a full title, including people occupying State land in good faith. | <ul style="list-style-type: none"> ▪ Cash compensation at replacement cost and reflective of fair market value at the time of payment of compensation; or land replacement with at least similar attributes to the acquired land in term of value, productivity, location, and titling. ▪ Any taxes and transactional cost borne by the project. ▪ Financial assistance for the renewal of the land ownership documents (certificate and land documents recognized as full title) for the residual area of the entitled persons' land. ▪ If the remaining affected land can no longer function for the specific use and utilization, the entitled party can ask for compensation for their entire land at replacement cost (Law No. 2 / 2012 article 35). | Not Yet Due |
| I. Loss of Crops | | | | |

| NO. | TYPE OF LOSS | ENTITLED PARTY / PERSON | ENTITLEMENT | COMPLIANCE ASSESSMENT |
|--|--|---|--|--|
| 2. | Loss of crops <u>Applies for land acquisition and land clearing</u> | Owners regardless of land tenure status (with certificate of recognizable rights, informal dwellers, occupants) | <ul style="list-style-type: none"> ▪ Annual crops: compensation will be paid based on prevailing market rates. ▪ Perennial crops: compensation at replacement cost taking into account crops' productivity and age. ▪ No deduction of depreciation for the valuation of crops. | Compliant Compensation to the loss of crops provided to the tenant farmers based on the valuation of independent appraisal |
| III. Economic Losses | | | | |
| 3. | Loss of arable land for farming <u>Applies to land clearing</u> | People who have leased / occupied GDE land for farming. | <ul style="list-style-type: none"> ▪ Cash compensation for loss of crops income equivalent to a minimum of one year of net product market value | Compliant <ul style="list-style-type: none"> ▪ Cash compensation for loss of income equivalent to 2 years of net product market value ▪ APs are allowed to harvest prior to land clearing |
| IV. Temporary or Permanent Impacts on Non-land Assets during Construction | | | | |
| 4. | Temporary or permanent impacts due to construction. | For those who have formal legal rights or whose claim on land is recognized as a full right. | <ul style="list-style-type: none"> ▪ For lease payments of the affected land by the contractor based on applicable rental fees and agreement with land owners. ▪ For productive land, rental fee will not be less than net income that would have been generated from the affected productive land. ▪ Compensation for non-land assets acquired (trees, plants, structures) | <ul style="list-style-type: none"> ▪ Not yet due |

| NO. | TYPE OF LOSS | ENTITLED PARTY / PERSON | ENTITLEMENT | COMPLIANCE ASSESSMENT |
|---------------------------------|---|---|--|---|
| | | | permanently affected will be compensated at replacement cost. <ul style="list-style-type: none"> ▪ Land will be restored to pre-project conditions or better after construction has been completed. | |
| 5. | | Those who have no formal legal rights (certificate) or recognizable title (informal dwellers, croppers) | <ul style="list-style-type: none"> ▪ Compensation for non-land assets (trees, crops, structures) at full replacement cost. ▪ No rental fee for the period of the impact. ▪ Land will be restored to pre-project conditions or better after construction has been completed. | |
| 6. | | Government or State enterprises / communal property and assets (e.g. schools, mosques, village office power poles, village road etc.) | <ul style="list-style-type: none"> ▪ Rebuilding the facility or provide cash compensation based on the agreement with affected party(ies). | |
| Other Appraisable Losses | | | | |
| 7. | Transaction cost <i><u>Applies to land acquisition and land clearing</u></i> | Those who has lost land and non-land assets regardless formal legal rights to land. | <ul style="list-style-type: none"> ▪ Allowance to cover administration cost, renewal of land ownership for residual land, land clearing. | Compliant Compensation received by tenant farmers free from any administration cost, all administration cost paid by Geodipa |

| NO. | TYPE OF LOSS | ENTITLED PARTY / PERSON | ENTITLEMENT | COMPLIANCE ASSESSMENT |
|-----|---|-------------------------|--|---|
| 8. | Compensation for waiting period (interest) <u>Applies to land acquisition and land clearing</u> | | <ul style="list-style-type: none"> ▪ Cash compensation based on risk-free interest, Government bank interest. | N/A Geodipa paid compensation timely/soon after the AHs agreed with the amount of compensation. |
| 9. | Loss of resource base (high risk of impoverishment) <u>Applies to land acquisition and land clearing</u> | | <ul style="list-style-type: none"> ▪ One household member per AH given the opportunity for employment in project related job during construction. ▪ Participation in livelihood restoration program (LRP). | Partially compliant <ul style="list-style-type: none"> ▪ Part of the LRP programs has been implemented (such as : the development of ground well and health services). The economic empowerment training will start to be carried out in 2021. ▪ The leasing coordinator hire as project workers. |
| 10. | Unanticipated impacts or losses | | <ul style="list-style-type: none"> ▪ Compensation for any damages to the properties, based on prevailing replacement cost. ▪ Provisions of mitigating measures shall be mitigated and documented based on project principles set forth in this RP. | Compliant <ul style="list-style-type: none"> ▪ The Update RP will be prepared for the additional land required for pad 7,9 and 30 which has not been covered in the approved RP 2019. ▪ Social Safeguards provision included in the bidding documents, including |

| NO. | TYPE OF LOSS | ENTITLED PARTY / PERSON | ENTITLEMENT | COMPLIANCE ASSESSMENT |
|-----|--------------|-------------------------|-------------|---|
| | | | | contractor responsibility to provide compensation for any damages to the public/private asset due to construction activities. |

VI. Outstanding Issues on Resettlement, Corresponding Plan of Action and Status

Table 19. Outstanding Issues and Concerns.

| Subproject | Outstanding Issues and Concerns | | Follow Action/s | | |
|------------------------------|---|--|---|--|-----------|
| | New/ Current | Pending from previous monitoring reports | Action | Responsible Institution | Deadline |
| Dieng Livelihood Restoration | Disclosure of the RP 2019 in the GDE's website | | Upload the RP in the project or GDE websites | Corporate Secretary | June 2021 |
| | Implementation of land acquisition for six land owners | | Will be started negotiate in 2022 | Land Acquisition Team and HSE Safeguard | Q4 2022 |
| | Additional land acquisition for expansion of wellpad 7, 9, 30 | | <ul style="list-style-type: none"> - Confirmation on the additional land according to design reviewed - DMS and SES of the additional land - Consultation with affected person and communities - Preparation of Update RP - Valuation of asset and payment of compensation | <p>Engineering team of the PMU</p> <p>ADB Consultant</p> <p>Independent Appraisal and GDE land acquisition committee</p> | June 2021 |

| Subproject | Outstanding Issues and Concerns | | Follow Action/s | | |
|--------------------------------|--|--|---|---------------------------|-----------|
| | New/ Current | Pending from previous monitoring reports | Action | Responsible Institution | Deadline |
| | Operationalize GRM | | - Appointed Grievance Redress Committe (GRC) and focal person. | HSE Safeguard | Q2 2021 |
| Livelihood Restoration Program | | - Implementation of training program as set forth in the RP - Hired NGO to develop SSID | HSE Safeguard | Q2 2021-onward | |
| Patuha 2 | Disclosure of DDR in the project website | | Upload DDR in the GDE or Project website | Corporate Secretary | June 2021 |
| | Issuance of IPPKH | | Completion requirement to issuance of IPPKH | HSE Safeguard | 2021 |
| | Land acquistion for replacement of forest land | | Preparation of RP for replacement of forest land Conduct Social Impact Assessment , include detailed measurment survey and SES for the replacement | IPPKH team, HSE Safeguard | Q3 2021 |

| Subproject | Outstanding Issues and Concerns | | Follow Action/s | | |
|------------|---------------------------------|--|---|-------------------------|----------|
| | New/ Current | Pending from previous monitoring reports | Action | Responsible Institution | Deadline |
| | | | <p>land</p> <p><u>Preparation of RP</u></p> <ul style="list-style-type: none"> • Submission of RP to Governor for location determination • Issuance of location determinaton <p>Implementation of land acquistion, include payment of compensation</p> | | |